



Lakes Association  
May 2019

## Seeking Signs of Spring



*"It's spring fever. That is what the name of it is. And when you've got it, you want—oh, you don't quite know what it is you do want, but it just fairly makes your heart ache, you want it so!"*

*~ Mark Twain ~*

### **WORDS OF GRATITUDE TO MWLA VOLUNTEERS**

For millennia, the lakes and rivers of Wisconsin have provided us with food, water, recreation, transportation, beauty, peace of mind, and many more benefits too numerous to list. It's now our turn to provide the lakes and rivers with our protection from the invasion of aquatic invasive species and polluting chemicals. Current research is revealing the health benefits of spending time in nature; we need to pay it forward by protecting nature, especially the rivers, lakes, and forests. It's everyone's responsibility to pitch in and do their part to monitor for AIS, become involved in citizen science activities, protect/restore their shorelines, plant native species, and forego the use of pesticides and fertilizers that end up in the water.

We are extremely grateful to the MWLA members who help us every year with AIS monitoring, assist with the trout pond and MWLA booth on July 4<sup>th</sup>, help at our Annual Meeting in July and with the Cran-a-rama pontoon tours in October. Thank you for your support and involvement; your efforts are our success! If you are not currently involved, please make it your personal goal to volunteer this year to do your part for the health of our lakes and rivers.

**Memberships can be renewed by filling out and sending in the renewal membership form included in this newsletter. Annual dues are \$25.00 from June 1 to May 31 of the following year.** When filling out your renewal form, please read the list of the many ways you can help, and check those you are most passionate about. With your generous donation of time and money, we can accomplish our mission to "Maintain, protect and enhance the quality of the

Manitowish Waters Chain of Lakes and other Township waters". Please help to recruit new MWLA members and volunteers by personally speaking to your friends and family. The money from memberships and other donations is used for a variety of great causes such as AIS projects, the restoration of Dead Pike Lake, Skiing Skeeters, AIS and water safety announcements, NLES Outdoor Education Field trips, Healthy Lakes grants (shoreline restoration and fish habitat), and stocking the July 4<sup>th</sup> Trout Pond.

### **2019 MWLA ANNUAL MEETING**

**Our 27<sup>th</sup> Annual Meeting** will be held at the North Lakeland Discovery Center **on Saturday, July 27, from 9:00 a.m. to noon. Please save the date on your calendar.** Sign-in starts at 8:30 a.m. with a short business meeting beginning promptly at 9:00 a.m. Breakfast will be available during sign-in and throughout the meeting. An educational program will also be presented in which Emily Heald will give an AIS update, David Bartling, of Bartling's Manitowish Cranberry Company, will give a presentation on their mission to grow quality crops while sustaining the land and water resources, Tom Kramer will report on Walleyes for Tomorrow, and Quita Sheehan, Vilas County Water Conservationist, will talk about healthy lakes.

There will be an opportunity for you to buy tickets for our raffle of unique items. Additional details regarding the meeting will be provided in the MWLA Summer Newsletter.

### **AIS NEWS**

by Emily Heald, NLDC Water Program Coordinator

#### **Curly Leaf Pondweed Update: Join us in protecting the lakes we love!**

Happy ice-free season! In the winter, we tend to increase our time indoors and decrease our overall physical activity... but this is not the case with CLP! It grows all winter under the ice and is about 3-4 feet tall by this time of year! By this point, after several years of chemical treatments and lake management planning, most of us are familiar with the CLP problem on the Chain. CLP continues to grow in several locations – northern Rest Lake, the Spider-Island Channel, Island Lake, Rice Creek, Stone Lake, and, most recently, Fawn Lake (discovered by Discovery Center staff in 2017).

CLP is a difficult invasive species to control due to its means of reproduction – turions. These are small reproductive buds that form along the stem of the plant and fall off around July 4<sup>th</sup>. Many of these turions sink to the bottom right away, but some also float with the currents to different areas. *Turions are viable for over seven years.* So, if we find a patch of CLP, we can be pretty darn sure there is a seed bank of turions below it! Therefore, CLP treatment takes multiple, vigilant years of attention. This year is no exception!

There are several ways you can help us in our fight against CLP:

1. Attend a free AIS identification training with me to learn how to identify CLP and other AIS.
  - a. If you have already taken the training, but it has been a few years, I strongly encourage you to attend for a refresher.
  - b. Trainings are 1pm-3pm on the following dates at Koller Park: Saturday June 15, Tuesday June 25, Saturday July 20, Tuesday July 30, Saturday August 10. ***Pre-registration is required. Sign up online [www.DiscoveryCenter.net](http://www.DiscoveryCenter.net), or email/call me.***
2. Report any potential CLP sightings to me. Make sure to grab a sample if you can (put it in a container with a little water) and take detailed notes (or a GPS coordinate) on where you found it.
3. **KEEP TRACK OF YOUR MONITORING HOURS AND TURN THEM IN TO ME. Volunteer hours are required for the grants that fund our efforts. Active volunteers are KEY to the long-term health of our waters.** Remember that once you know what to look for, ANY time on the water keeping your eyes open counts as monitoring – cruising around on the pontoon, fishing, walking the shoreline, etc. Forms are available at the NLDC or online: <https://discoverycenter.net/wp-content/uploads/2018/07/MW-Volunteer-Form-2018.pdf>
4. Do you like snorkeling, swimming, and being in the water? Volunteer to help us hand-harvest CLP.
5. Sign up for volunteer updates. I will send out more detailed updates a few times a year in addition to the MWLA updates. Interested in receiving these? Email me or give me a call and I'll put you on my distribution list.

**Emily Heald, Water Program Coordinator at the Discovery Center, [water@discoverycenter.net](mailto:water@discoverycenter.net) (715) 543-2085.**

#### **When ice pushes back: Ice heaves**

Over the winter, did you hear any eerie, warping, moaning sounds coming from the lake? You may have been quick to

assume your property was haunted, when it was the lake making and moving ice. The full process of ice formation and movement is complicated. Lots of variables go into the overall quality, thickness, and actions of ice. For the purpose of this article, we will simplify things.

When water freezes, its volume expands by about an eighth. This is why pipes burst when they freeze. The power behind freezing and thawing is also what splits granite and causes the mountains and earth to change over time... it is also what causes potholes to get worse in the spring! Ice also contracts with considerable drops in temperatures, and subsequent warming causes it to expand slightly. For example, a temperature increase from 14 to 32 degrees can cause a lake one mile across to expand by about 32 inches. That ice force can be exerted outward by as much as 30,000 pounds per square inch. If ice warms and expands while attached to something, like the shore or your dock, it will push outward against those objects (hence the destruction of piers or the upheaval of trees). The ice sheet farther from shore, however, expands at different rates from top to bottom. This causes internal stress fractures, which fill with water, which then freeze and expand the ice even more. This causes the overall process of ice heaving (ice shoving, ice jacking, etc.), where ice can act like a giant bulldozer along the shoreline. While ice can definitely be something to bring you relief on a hot summer day, it can also be an incredibly powerful force in the winter.

### Volunteer Opportunity: Citizen Lake Monitoring Network



The Citizen Lake Monitoring Network (CLMN) is a part of the Wisconsin Lakes Partnership where volunteers collect high quality data and provide it to scientists for analysis. This is a very easy way to volunteer and get in touch with some of the finer details of your lake! One of the easier sampling efforts conducted is called secchi disk monitoring (see image for what a secchi disk looks like). Secchi disks are opaque disks used to gauge clarity of water by measuring the depth at which the disk is no longer visible from the surface. Secchi readings are an awesome indicator of lake change. Is the water improving, declining, or maintaining? It only takes a few minutes a couple times a month! Currently all lakes on the Chain except for Spider are in need of secchi monitoring. If you are interested in volunteering, please let me know and we can work with the DNR to get you set up for monitoring!

### Welcome Summer 2019 Discovery Center interns!

My name is **Eric Curtis**, and I'm from Pekin, IL. I graduated from Pekin Community High School in 2016 and currently am a Junior at Millikin University in Decatur, IL studying Environmental Biology. My interests include fishing, hunting, fly tying, archery, and woodworking. I look forward to working with the North Lakeland Discovery Center and all its people dedicated to conserving natural resources!



Hello, my name is **Jarod Scheff** and I will be entering my Senior year at Denison University this fall. At Denison, I am majoring in Biology and play on the varsity football team as a cornerback. I am from Slinger, Wisconsin. My family and I have been coming up to the Manitowish Waters Chain of Lakes for twenty years. Whether it is in Slinger or in the Northwoods, I love fishing and water-skiing in my down time. Through my three years at college, I have learned a lot about the effects of aquatic invasive species on the systems they enter, and I am excited to play an active part in halting their spread. I look forward to the opportunity to spend this summer in the Northwoods and work for the NLDC to preserve the great beauty for future generations.

Hi! My name is **Nicole Spears**, and I'm from Green Bay, Wisconsin. I currently go to school at UW Stevens Point, and will soon be graduating with a degree in Water Resources with a minor in Soil Science. I have always loved the outdoors. Some of my favorite activities include (but are definitely not limited to) backpacking, fishing, kayaking/canoeing, hammocking, and taking care of my many plants. In the future I hope to move out west and help maintain and improve the water quality out there. I am very excited to see what my summer at NLDC can teach me.



### Purple Loosestrife Update by Emily Heald

A huge THANK YOU to North Lakeland 7th graders!! On May 8<sup>th</sup> they helped prep for the purple loosestrife (PL) biocontrol project. PL is a wetland invasive plant that is difficult to control due to its prolific

production of tiny seeds. Cella beetles are an excellent management option for large, established populations of PL. The beetles eat only PL and weaken the plants so that they grow shorter and produce fewer seeds, allowing native plants to re-establish.

We dug up about fifty PL roots from a local infestation site, and planted them in a controlled, netted area. Later in the spring, we will place cella beetles into the enclosures. They reproduce, and we end up with thousands of beetles to release onto other infestation sites, where the beetles will eat only PL.

This has been a very successful, long-term project. We would not be able to do this without the help of these hard-working students and volunteers!

Are you interested in volunteering for PL monitoring and management? Contact Emily at the Discovery Center for more information.



### **KUDOS TO EMILY HEALD!**

Congratulations! On May 11, Emily received a Wisconsin Lakes Stewardship Award from the Wisconsin Lakes Partnership for the extraordinary volunteer and professional efforts that she and the Discovery Center have provided to protect and improve our lakes. Emily was also selected as a winner in the Professional Individual category for the Invader Crusader Award by the Wisconsin Invasive Species Council. This award “recognizes her significant contribution to prevent, control or eradicate invasive species that harm Wisconsin lands, waters, and wetlands.”



**2019 Wisconsin Lakes Stewardship Award**  
Rolf Ethun, John Heusinkveld, Emily Heald, Karen Dixon, Glen Wildenburg

## FLOAT YOUR BOAT TRIVIA RALLY

Saturday, June 22

The MWLA is one of many sponsors who encourage you to join the Discovery Center for a fun event that is sure to test and increase your knowledge and awareness of Northwoods ecology and history. Participants must provide their own boat and obey all DNR water safety rules. We will host an evening BBQ and announce the winners of the scavenger hunt and the award for the boat with the best theme, best pictures, and highest points.

The BBQ will be at the **Lion's Pavilion at the Manitowish Waters Community Center Complex, 5733 Airport Rd, Manitowish Waters** from 5 to 6:30 p.m. Call the Discovery Center at (715) 543-2085 and talk to Emily, Annie, or Julie for more details or to register. Register by June 18. Teams of 8 participants or less, \$75 per team. Saturday, June 22 from 12:00 - 4:00 p.m., BBQ at 5:00 p.m. See you there or Walk the Plank!



## WATER SAFETY PATROL

by Dan Cardinal, IOC

Hope everyone had a good and safe winter. I want to take this opportunity to introduce a new boat patrol officer to the Manitowish Chain. Her name is **Leah Alexander**. She is new to the area but enthusiastically looking forward to spending time on the Chain meeting all of you. Between Leah and Zak Paulson, I am confident that all the users of the Chain will have a great and safe summer.



While there have been little or no boating law changes this year, your Chain has experienced an increasing number of wake surfing activity behind the larger boats. This is a permitted activity, but I need to remind the operators that they are responsible for that wake as it continues across the lake. In some cases, it may swamp smaller craft such as canoes, kayaks, sail boarders or paddle boats. Large wakes can also damage shoreline property and animal habitat. This beautiful Chain was once a meandering series of rivers before the Rest Lake dam was built. The current shoreline is very fragile and vulnerable to boat wake erosion. Please keep this in mind when boating and especially if wake surfing. Your boat patrol is looking forward to a fun safe summer as in the past.

The MWLA board of directors also encourages you to please boat courteously and be aware of the property of others, fishermen, those swimming, canoeing, paddle boarding and kayaking. **And remember to observe slow no wake rules within 100' of all shorelines and other boaters, in channels and anywhere buoys indicate a slow no wake area.** Please share this information with your neighbors, friends and guests.

## VILAS COUNTY LAKES & RIVERS ASSOCIATION

The Vilas County Lakes and Rivers Association will again partner with the Oneida County Lakes and Rivers Association to host a multi-county workshop scheduled for Friday, July 12 in the Educational Building using the same format as last year. Registration is 8:00 to 9:00 a.m.; program 9:00 to noon with annual meetings held afterward. This workshop is free and is open to all who believe in the importance of protecting our lakes and rivers. To view the winter edition of the VCLRA Newsletter go to <file:///C:/Users/ked28/AppData/Local/Temp/January%20Newsletter%202019-1.pdf> The VCLRA is celebrating its 25<sup>th</sup> anniversary this year with a roll out of its newly designed interactive website. Please visit at <https://vclra.org/>

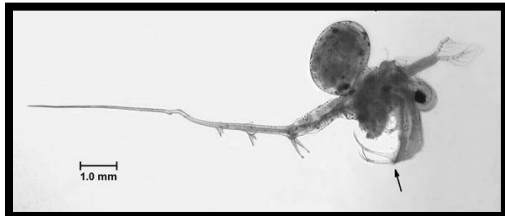
## SPINY WATER FLEA A NUISANCE IN WISCONSIN LAKES

by L. Malik Anderson

Spiny water fleas often spread through recreational boating. Aquatic invasive species organizations are working to educate boaters and decrease the spread. Spiny water fleas often clog eyelets of fishing rods and prevent anglers from catching fish. The tiny organism, (approximately 1 cm (0.4 inches) which reproduces asexually and lives in

populations, hatches in the bottom of water bodies and eats zooplankton, which are food to native Wisconsin fish, Walsh said. They also eat daphnia, which are responsible for consuming algae and keeping the lake clear. Since there are not enough daphnia eating algae, the lakes look much murkier. The spiny water flea's long tail can make it hard for small fish to handle them, but Bluegill's detach the tail before consuming the organism.

One effort to prevent the spread is the Clean Boats, Clean Waters program, which trains volunteers to teach boaters how to clean their boats. "We do know the law to stop the spread of aquatic invasive species – stop and remove, drain and remove – is really effective," Campbell said. He also suggested wiping off equipment with towels, treating equipment with bleach solution (2 ½ tablespoons per gallon of water) and spraying off boats with a high-pressure washer.



Emily Heald is pleased to inform us that the spiny water flea sediment samples that were collected from the Chain last summer came back **negative** for the presence of spiny water flea. It looks like we are doing a great job on prevention and education so far! Keep up the good work everyone!



### IN MEMEORY OF JACK KING

Former Manitowish Waters and Clear Lake resident, Jack King, passed away over the Christmas weekend. Jack was a former MWLA president and one of the founders of the Association. During his tenure, he helped organize the MW Chain Defense Fund to fight the DNR's plan to lower the water levels in the MW Chain. Jack was a passionate advocate for the health of the Township waters. He was also a longtime volunteer at the North Lakeland Discovery Center, therefore, a donation from the MWLA will made in his memory to the NLDC to honor his love of nature.

**Dumping of yard waste into Wisconsin waters is prohibited.** Please dispose of your yard waste appropriately; it should not be dumped into our rivers and lakes! If you see someone raking yard waste into the water, please inform them of the Natural Resources rule below. Contact DNR Warden Rich Thole at 715-605-2130 to report shoreland violations.

NR 30.12 rule: <https://docs.legis.wisconsin.gov/statutes/statutes/30/11/12>

Unless an individual or a general permit has been issued under this section or authorization has been granted by the legislature, no person may do any of the following unless a permit has been acquired:

- (a) Deposit any material or place any structure upon the bed of any navigable water where no bulkhead line has been established.
- (b) Deposit any material or place any structure upon the bed of any navigable water beyond a lawfully established bulkhead line.

~~~~~C  
 Check out our website at [www.mwlakes.com](http://www.mwlakes.com) to access board meeting minutes, lakes-related articles, information on aquatic invasive species, past e-newsletters, and many other interesting topics.

**The MWLA Board of Directors appreciates your continued support.**

**Bob Becker**  
 President  
 Spider Lake  
 715-543-2219

**Paul Puccinelli**  
 Vice President  
 Rest Lake  
 715-904-0951

**Eleanor Butler**  
 Treasurer  
 Alder Lake  
 715-543-8401

**Angela Dombrowicki**  
 Secretary  
 Alder Lake  
 608-234-0403

**Karen Dixon**  
 Past-President  
 Manitowish River  
 715-543-8141

**Mary Bowlus**  
 Rest Lake  
 715-543-2896

**Greg Holt**  
 Benson Lake  
 715-543-8168

**Tom Kramer**  
 Hwy. 51  
 715-543-8000

**Jody Miller**  
 Sturgeon Lake  
 715-543-2389

**Delp Schafer**  
 Rest Lake  
 715-543-2370

**Dennis Wilm**  
 Spider Lake  
 715-543-2378

**Gale Wolf**  
 Dead Pike Lake  
 715 543-2439



**MWLA Membership Application/Renewal**

Annual Dues **\$25.00** (June 1 to May 31 of the following year)  
Make check payable to: Manitowish Waters Lakes Association or MWLA  
**Mail to: P.O. Box 286, Manitowish Waters, WI 54545**

**The Manitowish Waters Lakes Association is a 501(c)(3), not-for-profit organization.  
All donations to the MWLA are fully tax deductible as allowed by relevant law.**

**MWLA does not share its membership list with other organizations.**

Name(s) \_\_\_\_\_

Lake/river you live on or are closest to if off-water \_\_\_\_\_

Primary Mailing Address \_\_\_\_\_

City \_\_\_\_\_ State \_\_\_\_\_ Zip \_\_\_\_\_

Manitowish Waters Address \_\_\_\_\_

Indicate when mail is delivered to you in MW (from what month to what month):  
\_\_\_\_\_ to \_\_\_\_\_

MW Phone \_\_\_\_\_ Primary Residence Phone \_\_\_\_\_

Cell Phone \_\_\_\_\_

Please provide an email address so you can receive MWLA e-Alerts and e-Newsletters.

Email address: \_\_\_\_\_  
**(Please print clearly)**

With the awarding of the WDNR Grants, we are especially in need of members who are willing to help offset the in-kind hours required by the grants.

I am willing to volunteer some of my time to:

\_\_\_ monitoring AIS    \_\_\_ 4<sup>th</sup> of July    \_\_\_ Annual Meeting    \_\_\_ Cran-a-rama    \_\_\_ Mailings

If you are unable to volunteer the gift of time, we ask that you please consider making a monetary contribution.

I am including a donation for the following:

\_\_\_ Aquatic Invasive Species Education and Prevention    \_\_\_ Fish Habitat Project  
\_\_\_ Annual Meeting Raffle    \_\_\_ Fish Stocking (Walleyes for Tomorrow - WFT)  
\_\_\_ Miscellaneous